

# Is it ever Ethical or Moral?

Ethical-Moral Junctions in Psychotherapy & Mental Health Services

In Person or Online – 1hr to 3hrs CE

Unique Keynote Presentation

**Presenter: Ofer Zur, Ph.D.**

**Beyond the 'Clinical-Ethical-Legal-Risk Management'**

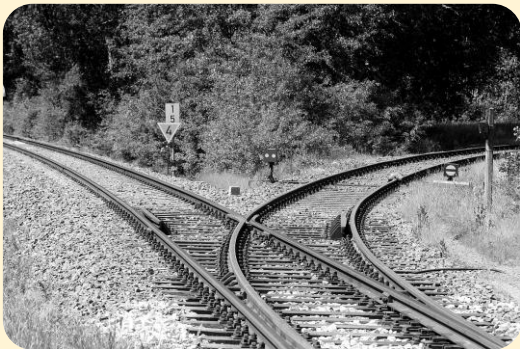
**A course on ethics, the significance of context and personal values & moral junction faced by M. H. professionals**

The course will:

- **Cover**- Ethical & Moral Junctions in Mental Health
- **Differentiate**- Clinical, Ethical, Legal, Risk Management & Moral-Values
- **Identify**-Standard of Care in M. H. Services
- **Consider Context**- Client, Setting, Culture, Location
- **Presenter**- Several short videos

CV: <https://drzur.com/resume/>

Teaching: <https://drzur.com/teaching/>



Ethicist, Author, Instructor,  
Forensic Psychologist, Critical Thinker

## Section A: Common Private Practice Junctions

1. Protect suicidal client **or** protect therapist
2. Therapist's quandary: To lie **or** not to lie
3. Give a clinically correct DSM DX **or** a false DX
4. Clinical Effectiveness **vs.** Risk  
Management: Managing Boundaries: Gifts, Touch, etc.
5. Digital Immigrants Therapist **vs.** Digital Native Clients
6. Provide **or** oppose support for gender transition in minors?
7. The abortion junction:
  - a. Morally oppose **or** support women seeking elective abortion
  - b. Oppose **or** help women patients seeking abortions in states that ban abortions?
8. Recommend helpful but illegal psychedelics
9. To be a coach **or** licensed M.H. professional
10. To practice **or** not to practice across state lines
11. On Context: Is it ethical **or** unethical to be naked with clients?

## Section B: Psych. Eval & Treatment with Potentially Fatal Consequences

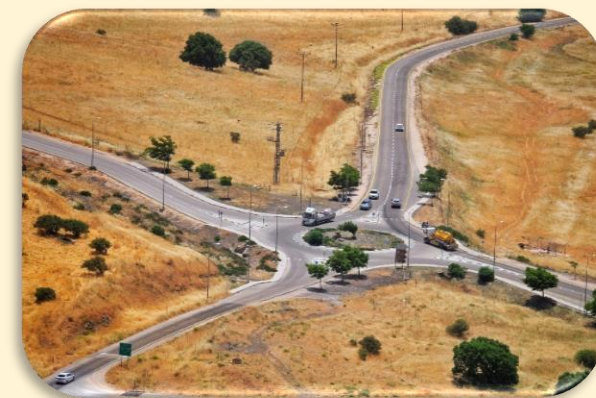
12. Support **or** deny wish for "End of Life" option:
  - a. Support **or** deny wish for "End of Life" option for medically compromised
  - b. Palliative psychiatry: Assist **or** not death option for the physically healthy but mentally "exhausted"
13. Deny **or** support "receivers" life saving organ transplants
14. Ultimate Junction: Increase **or** Decrease the chance of clients' death?
15. Enable **or** deny execution of death-row inmates:
  - a. Morally oppose **or** support the death sentence
  - b. Enable **or** not enable execution of specific-individual death-row inmate
16. Racially-based pathological diagnosis
17. Support **or** oppose Bariatric surgery

[droferzur@drzur.com](mailto:droferzur@drzur.com)

[www.drzur.com](http://www.drzur.com)

## Section C: Forensic M.H. Junction

18. Deny **or** support sex offender's civil liberties?
19. Comply **or** not comply with mandatory reporting that can cause more harm to victims
20. Does a Psychologist support **or** not support the "Not guilty by reason of insanity" plea?
21. Increase **or** decrease prisoners' risk of abuse or death?
22. Support **or** Oppose immigration-deportation



**Choose the specific topics that are most relevant to your organization and intended audience.**